

# Mark Stephenson's

ESTATE & LETTING AGENTS



## Milliner's House, 9 Burgate, Pickering, YO18 7AU

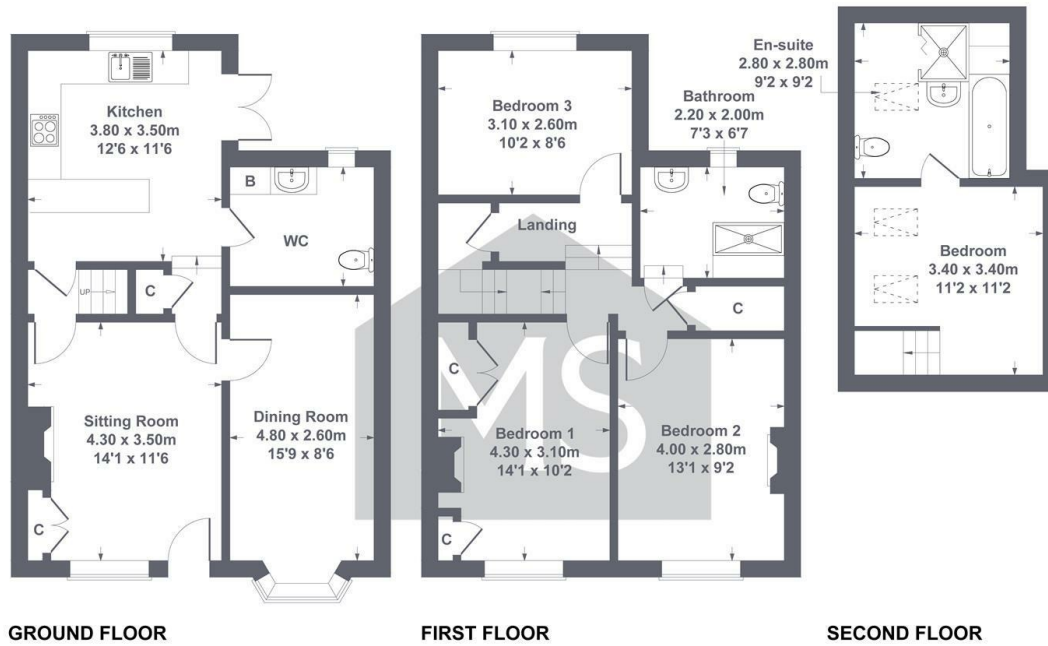
£1,500 Per Month

- Superbly modernised throughout to a very high standard
- Original Features Preserved
- Four Bedrooms
- Walking distance of town centre
- Courtyard garden to the rear
- Single garage

13a Yorkersgate, Malton, North Yorkshire, YO17 7AA  
01653 692500

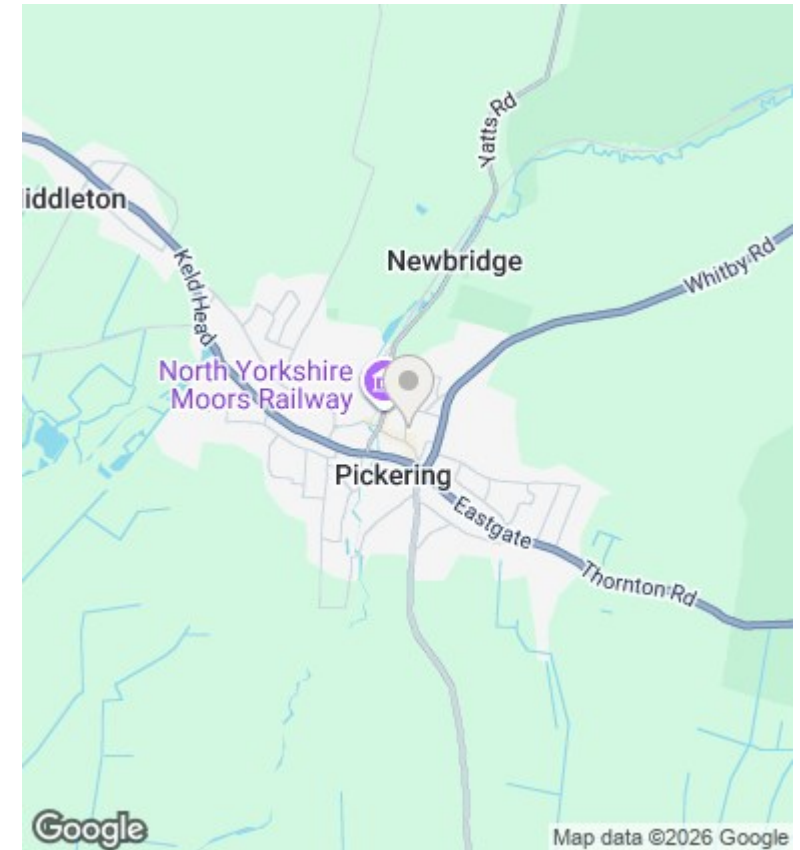
malton@markstephensons.co.uk  
<http://www.markstephensons.co.uk>

Approximate Gross Internal Area 1335 sq ft - 124 sq m



SKETCH PLAN FOR ILLUSTRATIVE PURPOSES ONLY  
 All measurements walls, doors, windows, fittings and appliances, their sizes and locations, are approximate only. They cannot be regarded as being a representation by the seller, nor their agent.

Produced by Potterplans Ltd. 2025



## Directions

## Viewings

Viewings by arrangement only. Call 01653 692500 to make an appointment.

## Council Tax Band

B

## EPC Rating:

C

| Energy Efficiency Rating                    |   | Current                 | Potential |
|---|---|-------------------------|-----------|
| Very energy efficient - lower running costs |   |                         |           |
| (92 plus)                                   | A |                         |           |
| (81-91)                                     | B |                         | 81        |
| (69-80)                                     | C | 70                      |           |
| (55-68)                                     | D |                         |           |
| (39-54)                                     | E |                         |           |
| (21-38)                                     | F |                         |           |
| (1-20)                                      | G |                         |           |
| Not energy efficient - higher running costs |   |                         |           |
| England & Wales                             |   | EU Directive 2002/91/EC |           |